



**REGIONAL SPECIALISED METEOROLOGICAL CENTRE-TROPICAL CYCLONES, NEW DELHI
TROPICAL WEATHER OUTLOOK**

DEMS-RSMC SPECIAL TROPICAL CYCLONES NEW DELHI DATED 11.11.2022

TROPICAL WEATHER OUTLOOK FOR NORTH INDIAN OCEAN (THE BAY OF BENGAL AND THE ARABIAN SEA) VALID FOR NEXT 120 HOURS ISSUED AT 0600 UTC OF 11.11.2022 BASED ON 0300 UTC OF 11.11.2022.

BAY OF BENGAL:

YESTERDAY'S LOW PRESSURE AREA OVER SOUTHWEST BAY OF BENGAL OFF SRILANKA COAST BECAME WELL MARKED LOW PRESSURE AREA OVER SOUTHWEST BAY OF BENGAL & ADJOINING AREAS OF NORTHEAST SRILANKA AT 0000 UTC OF TODAY, THE 11TH NOVEMBER. IT LAY OVER SOUTHWEST BAY OF BENGAL & ADJOINING AREAS OF NORTHEAST SRILANKA, OFF TAMILNADU COAST AT 0300 UTC OF TODAY. IT IS VERY LIKELY TO MOVE NORTHWESTWARDS TOWARDS TAMILNADU-PUDUCHERRY COASTS TILL 12TH NOVEMBER MORNING (0000 UTC). THEREAFTER, IT WOULD MOVE WEST-NORTHWESTWARDS ACROSS TAMILNADU-PUDUCHERRY AND KERALA DURING 12TH TO 13TH NOVEMBER, 2022. THEREAFTER, IT IS LIKELY TO EMERGE INTO SOUTHEAST & ADJOINING EASTCENTRAL ARABIAN SEA AS CYCLONIC CIRCULATION OR LOW PRESSURE AREA ON 13TH MORNING. THERE IS POSSIBILITY OF INTENSIFICATION INTO WELL MARKED LOW PRESSURE AREA/DEPRESSION, WHILE MOVING NORTHWESTWARDS.

ACCORDING TO INSAT 3D IMAGERY, THE VORTEX LAY CENTERED OVER SOUTHWEST BAY OF BENGAL NEAR LAT 9.5⁰N AND LONG 83.0⁰E WITH INTENSITY T1.0. ASSOCIATED SCATTERED TO BROKEN LOW AND MEDIUM CLOUDS WITH EMBEDDED INTENSE TO VERY INTENSE CONVECTION LAY OVER SOUTHWEST & ADJOINING WESTCENTRAL BAY OF BENGAL, SRI LANKA, PALK STRAIT, GULF OF MANNAR, TAMILNADU & NEIGHBOURHOOD. MINIMUM CLOUD TOP TEMPERATURE (CTT) MINUS 93⁰C.

PROBABILITY OF CYCLOGENESIS (FORMATION OF DEPRESSION) DURING NEXT 120 HRS:

24 HOURS	24-48 HOURS	48-72 HOURS	72-96 HOURS	96-120 HOURS
NIL	NIL	NIL	NIL	NIL

ARABIAN SEA:

SCATTERED LOW AND MEDIUM CLOUDS WITH EMBEDDED INTENSE TO VERY INTENSE CONVECTION OVER SOUTH ARABIAN SEA & COMORIN AREA

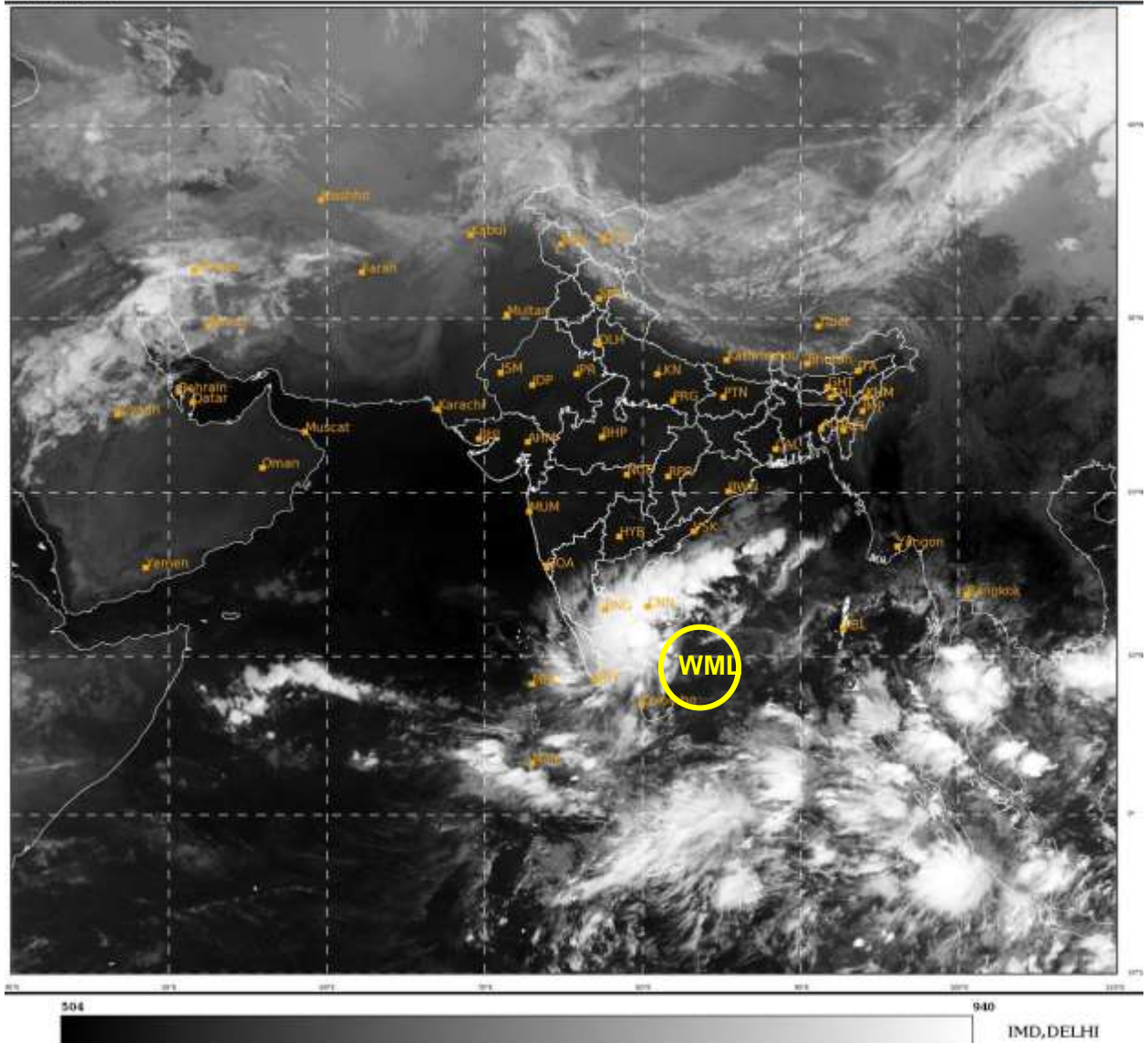
PROBABILITY OF CYCLOGENESIS (FORMATION OF DEPRESSION) DURING NEXT 120 HRS:

24 HOURS	24-48 HOURS	48-72 HOURS	72-96 HOURS	96-120 HOURS
NIL	NIL	NIL	NIL	LOW

REMARKS: NIL

SAT : INSAT-3D IMG
IMG_TIR1 10.8 um
LIC Mercator

11-11-2022/(0300 to 0326) GMT
11-11-2022/(0830 to 0856) IST



WML:Well Marked Low Pressure Area

Cloud distribution: (a) Isolated: <25%, Scattered:25-50%, Broken: 51-75%, Solid:>75%, Convection Intensity: (a) Weak: Cloud Top Temperature (CTT) >-25°C, (b) Moderate: CTT: - 25°C to -40°C, (c) Intense: CTT: - 41°C to -70°C and (d) Very Intense: : Less than -70°C
PROBABILITY OF CYCLOGENESIS (FORMATION OF DEPRESSION): NIL: 0%, LOW: 1-33%, , MODERATE: 34-66% AND HIGH: 67-100%
This is a guidance Bulletin for WMO/ESCAP Panel Member countries. Visit respective National websites for Country specific Bulletins